

# Exchange Studies at Kiel University of Applied Sciences

Enjoy life at the seaside

Further  
information:

[www.fh-kiel.de/  
exchange-students](http://www.fh-kiel.de/exchange-students)



# Contents

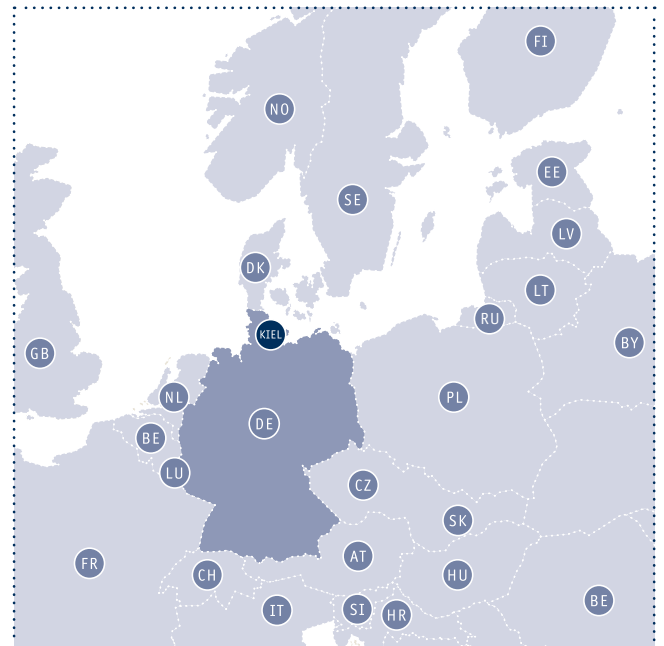
Kiel as the Host City .....	5
Kiel University of Applied Sciences .....	7
Academic Information .....	7
Academic Calendar .....	9
Orientation Days .....	11
Application.....	11
Socialising in Kiel .....	13
Extracurricular Projects.....	13
Good to Know .....	15
Campus Map.....	18
Imprint .....	19

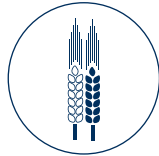


## Kiel as the Host City

Kiel is the capital of Schleswig-Holstein, the northernmost federal state of Germany. One sixth of Kiel's 247,000 inhabitants study at one of the three public universities, making Kiel a young and vibrant city.

Situated on the Baltic Sea with its inner bay, called Förde, and close to the Kiel Canal, Kiel has become one of Germany's major maritime centres. The city is well known for Kiel Week, the biggest annual sailing event worldwide and is an important port of call for cruise ships touring the Baltic Sea. Besides the wide variety of water sports facilities, including beautiful beaches, which can be reached by public transport, Kiel offers a large choice of affordable bars, cafés and restaurants.

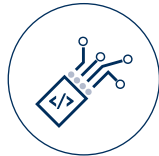




Agriculture



Business Management



Computer Science and Electrical Engineering



Mechanical Engineering



Media and Institute of Civil Engineering



Social Work and Health

## Kiel University of Applied Sciences

With around 7,600 students, Kiel University of Applied Sciences is the largest institution of its kind in Schleswig-Holstein. Six different faculties offer 37 programmes leading to a Bachelor's or Master's degree. The two campuses located on Kiel's east shore and in Österrönfeld (Faculty of Agriculture) are equipped with high-end laboratories and working spaces that provide a perfect working and learning environment.

The International Office and the Centre for Languages and Intercultural Studies provide services, activities and language courses to international students to enable them to profit from their study abroad semester in the best way possible.

## Academic Information

The main language of instruction at Kiel University of Applied Sciences is German. However, most faculties offer a range of courses taught in English. You can also choose to take a set semester programme in English worth 30 ECTS, e.g.:

- European Project Semester
- Business Project Semester
- Marketing and Cross Culture
- Globalization and Lifeworld of Young Adults

You can find further information on [www.fh-kiel.de/exchange-students](http://www.fh-kiel.de/exchange-students).

Students can take part in one of the numerous language courses at the Centre for Languages and Intercultural Studies to deepen their knowledge of German or to learn a new language like Chinese or Polish – there is something for everyone!





## Academic Calendar

Both semesters are independent from each other. Exchange students can begin their stay at Kiel University of Applied Sciences either in September or in March.

In the middle of November and in the middle of May we offer the Interdisciplinary Weeks. During these two weeks, students can take courses from other faculties and take part in social activities.

---



### Winter semester:

---

Official start:	01 September
Orientation Days:	Beginning of September
Start of Courses:	End of September
End of Courses:	End of January
Examinations:	February

### Summer semester:

---

Official start:	01 March
Orientation Days:	Beginning of March
Start of Courses:	End of March
End of Courses:	End of June
Examinations:	July



## Orientation Days

The programme for exchange students always starts with the Orientation Days in the International Office where necessary formalities are settled and comprehensive information about studies at Kiel University of Applied Sciences and life in Kiel in general is given.

The Centre for Languages and Intercultural Studies offers a linguistic and cultural induction course to brush up the students' knowledge of German language and culture. This course includes excursions and social activities as kick-off for a successful and exciting stay in Kiel.

---



## Application

### Requirements:

- nomination by one of our partner universities
- good knowledge of English (B2) or German (B2), depending on the study programme and the faculty
- good academic records

### Applications must be received before

- 1 June (for the winter semester / whole year) or
- 1 November (for the summer semester).

Instructions how to apply can be found here:

[www.fh-kiel.de/exchange-students](http://www.fh-kiel.de/exchange-students)





## Socialising in Kiel

Kiel University of Applied Sciences offers different opportunities for you to get in touch with local students. Students from the Local Erasmus Initiative will assist you with organisational matters and any questions you might have regarding life in Kiel. They organise social events and excursions.

We will also match you with a personal buddy who will get in touch with you before your arrival in Kiel, help you settle in and will be your personal contact for any questions you might have.

---



## Extracurricular Projects

At Kiel University of Applied Sciences you can choose to join one of numerous projects alongside your studies to gain additional experience and simply have fun. Students from different faculties work together to construct a race car, others build and programme robots or create video content for Campus TV.

Find more information on:  
[www.fh-kiel.de/en/campus/projects/fair-of-possibilities](http://www.fh-kiel.de/en/campus/projects/fair-of-possibilities)





## Good to Know

### Accommodation

Kiel is a popular student city. Therefore, an early search for a place to stay is recommended.

Read more on:

[www.fh-kiel.de/exchange-students](http://www.fh-kiel.de/exchange-students)



### Living Expenses

Living expenses for students in Kiel run to approximately € 800 per month. Please keep in mind that especially at the beginning of the semester, costs may be higher:



Semester fee (including ticket for public transport for the whole semester): approx. € 270



Student housing: € 170-400 per month (+ deposit for room/flat)



1 l milk: € 0.80



Pizza: from € 5



Small beer in a bar: € 3-4



Glass of wine in a bar: € 3-5



Gym membership: € 69 for three months





### Activities

During the semester, the International Office, the Local Erasmus Initiative and the Centre for Languages and Intercultural Studies offer different activities, enabling students to not only get to know Kiel, Schleswig-Holstein and other places in Germany like Hamburg and Berlin by going on excursions, but also to meet both international and local students.

### Sports

The sports office of Kiel University of Applied Sciences offers an attractive programme including climbing in our on-campus climbing hall, kitesurfing at the nearby beach or sailing on the Kieler Förde.

[www.fh-kiel.de/en/campus/university-sports/](http://www.fh-kiel.de/en/campus/university-sports/)



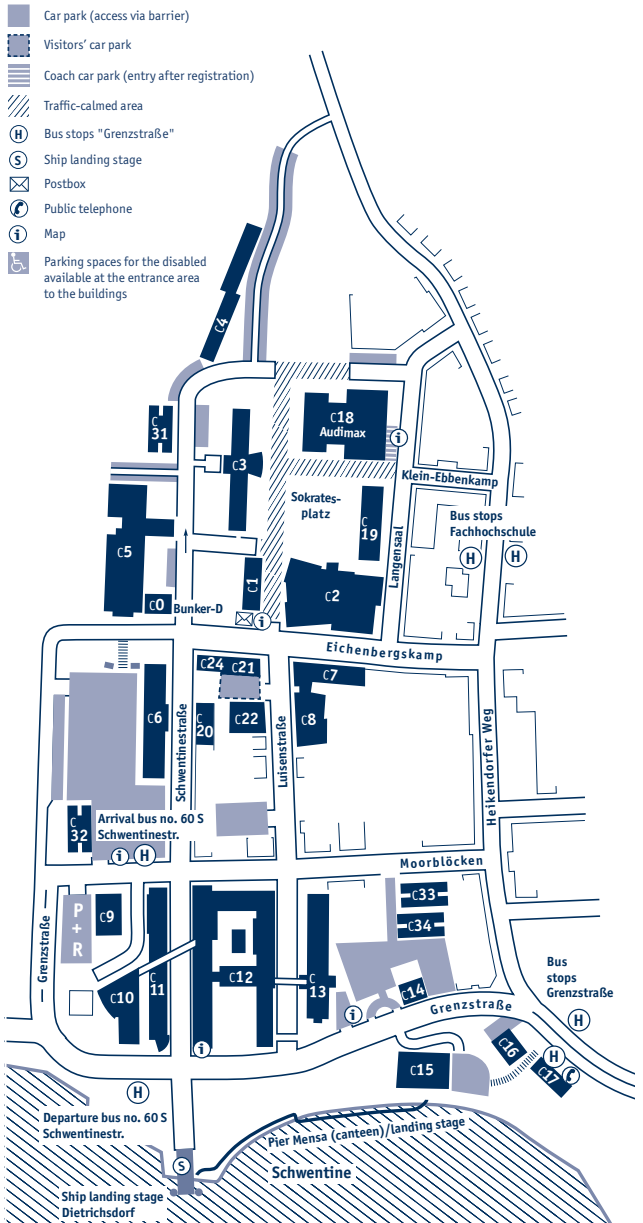
Students of Kiel University of Applied Sciences can also participate in the sports programme of Kiel University (CAU) for a reduced fee. You can find their offer here:

[www.sportzentrum.uni-kiel.de](http://www.sportzentrum.uni-kiel.de)



# Campus Map

As of September 2020



# Imprint

Editor: International Office  
Kiel University of Applied Sciences  
Sokratesplatz 4  
24149 Kiel  
Phone +49 431 210 1800  
Fax +49 431 1810  
international@fh-kiel.de  
www.fh-kiel.de

Text and Conception: International Office

Translation/Linguistic Revision: Dix Lingo

Graphic Design: Irina Nünning

Photos/Graphics:

- p. 4: Moritz Maier; Michael Stefan/igerskiel; Kiel-Marketing
- p. 5-6: Kiel University of Applied Sciences
- p. 8: Kiel University of Applied Sciences
- p. 10: Kiel University of Applied Sciences
- p. 12: Mona Taube; Kiel University of Applied Sciences
- p. 14-15: Kiel University of Applied Sciences
- p. 16: Mathias Müller; Kiel University of Applied Sciences
- p. 18: Kiel University of Applied Sciences

Edition: January 2021



[www.fh-kiel.de/international](http://www.fh-kiel.de/international)

**Contact**

Fachhochschule Kiel  
Hochschule für Angewandte Wissenschaften –  
University of Applied Sciences  
International Office  
Sokratesplatz 4  
D-24149 Kiel

Phone: +49 431 210-0  
[international@fh-kiel.de](mailto:international@fh-kiel.de)  
[incoming@fh-kiel.de](mailto:incoming@fh-kiel.de)  
Local Erasmus Initiative Kiel: [leik@fh-kiel.de](mailto:leik@fh-kiel.de)

facebook: [www.facebook.com/FHKiel](http://www.facebook.com/FHKiel)  
instagram: [instagram.com/fachhochschule\\_kiel/](https://www.instagram.com/fachhochschule_kiel/)  
linkedIn: [de.linkedin.com/school/fachhochschule-kiel/](https://www.linkedin.com/school/fachhochschule-kiel/)